



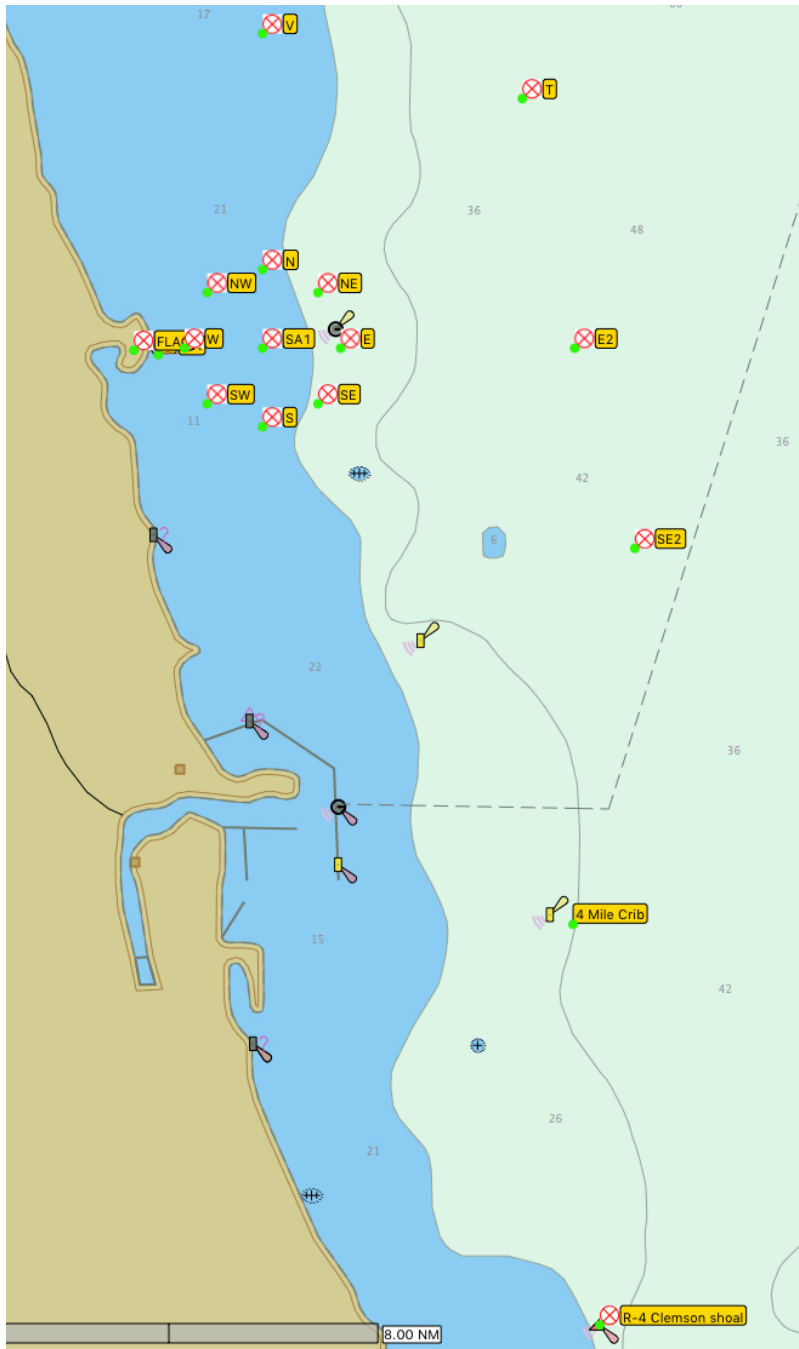
# CHICAGO CORINTHIAN YACHT CLUB



## SAILING INSTRUCTIONS - AMENDMENT #2 -- HOBELMAN - LONG DISTANCE --

### COURSE DIAGRAMS

- ALL MARKS DEPICTED



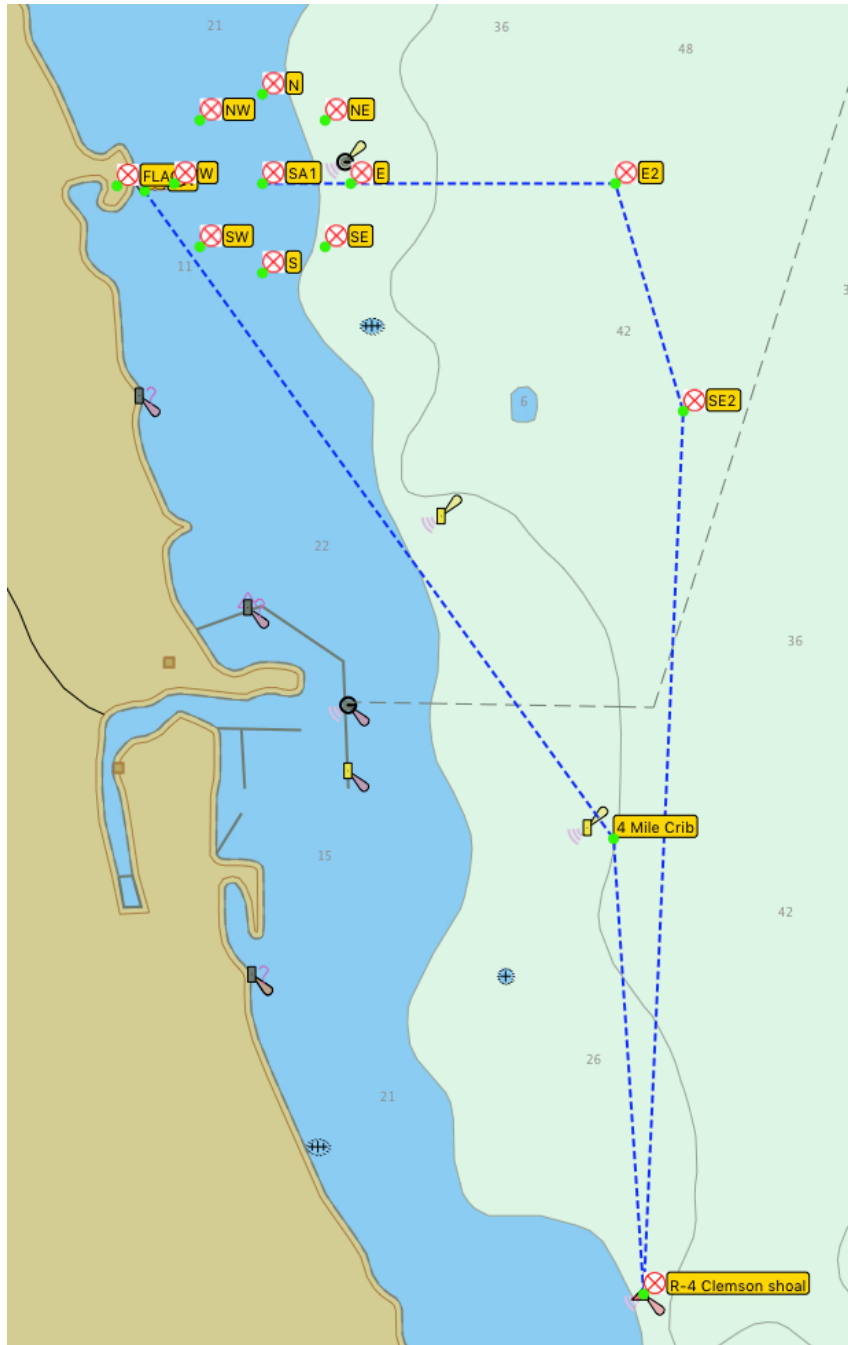


# CHICAGO CORINTHIAN YACHT CLUB



## SAILING INSTRUCTIONS - AMENDMENT #2 -- HOBELMAN - LONG DISTANCE --

COURSE "E" (22.96NM)



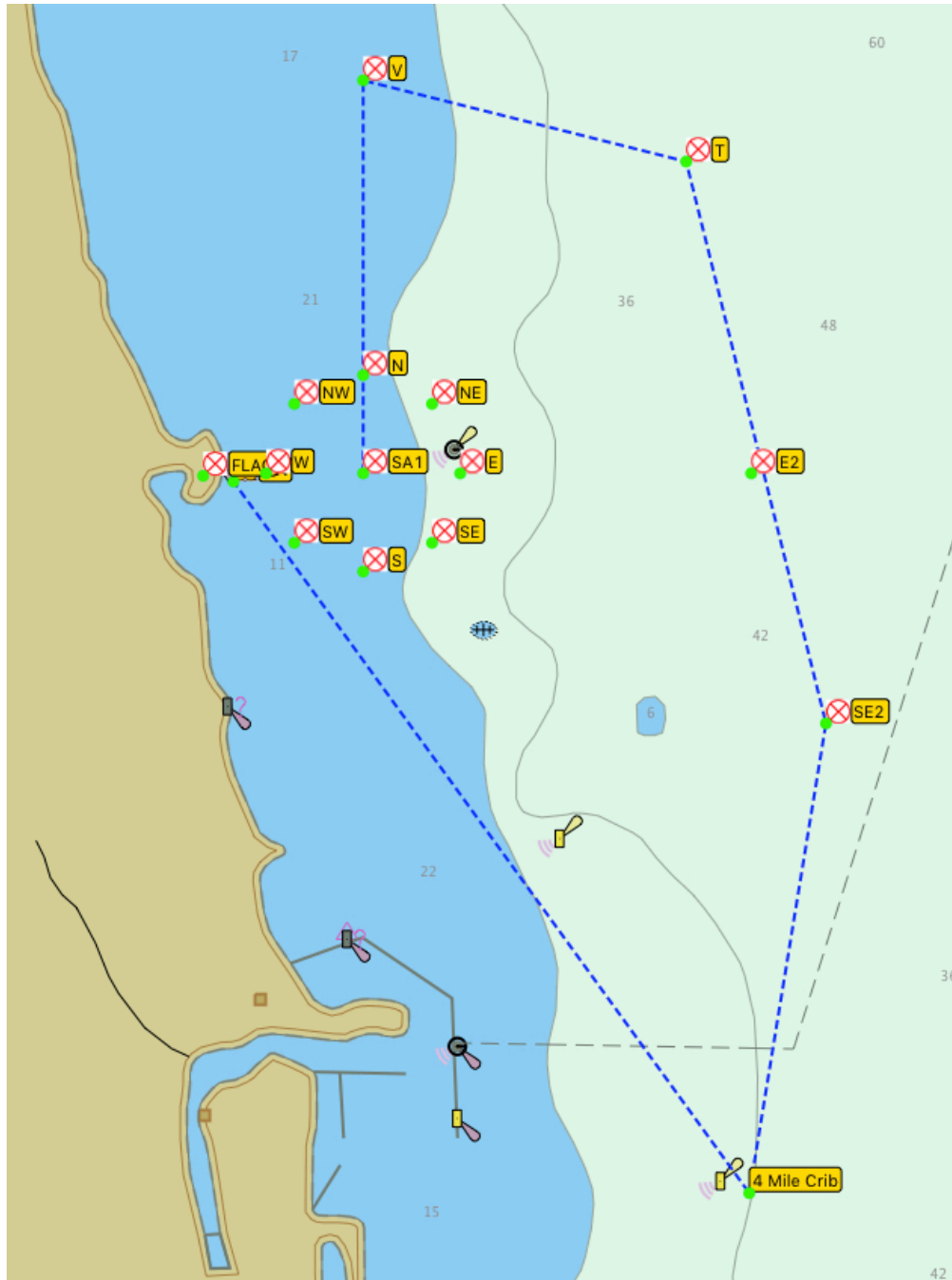


# CHICAGO CORINTHIAN YACHT CLUB



## SAILING INSTRUCTIONS - AMENDMENT #2 -- HOBELMAN - LONG DISTANCE --

COURSE "N" (20.33NM)



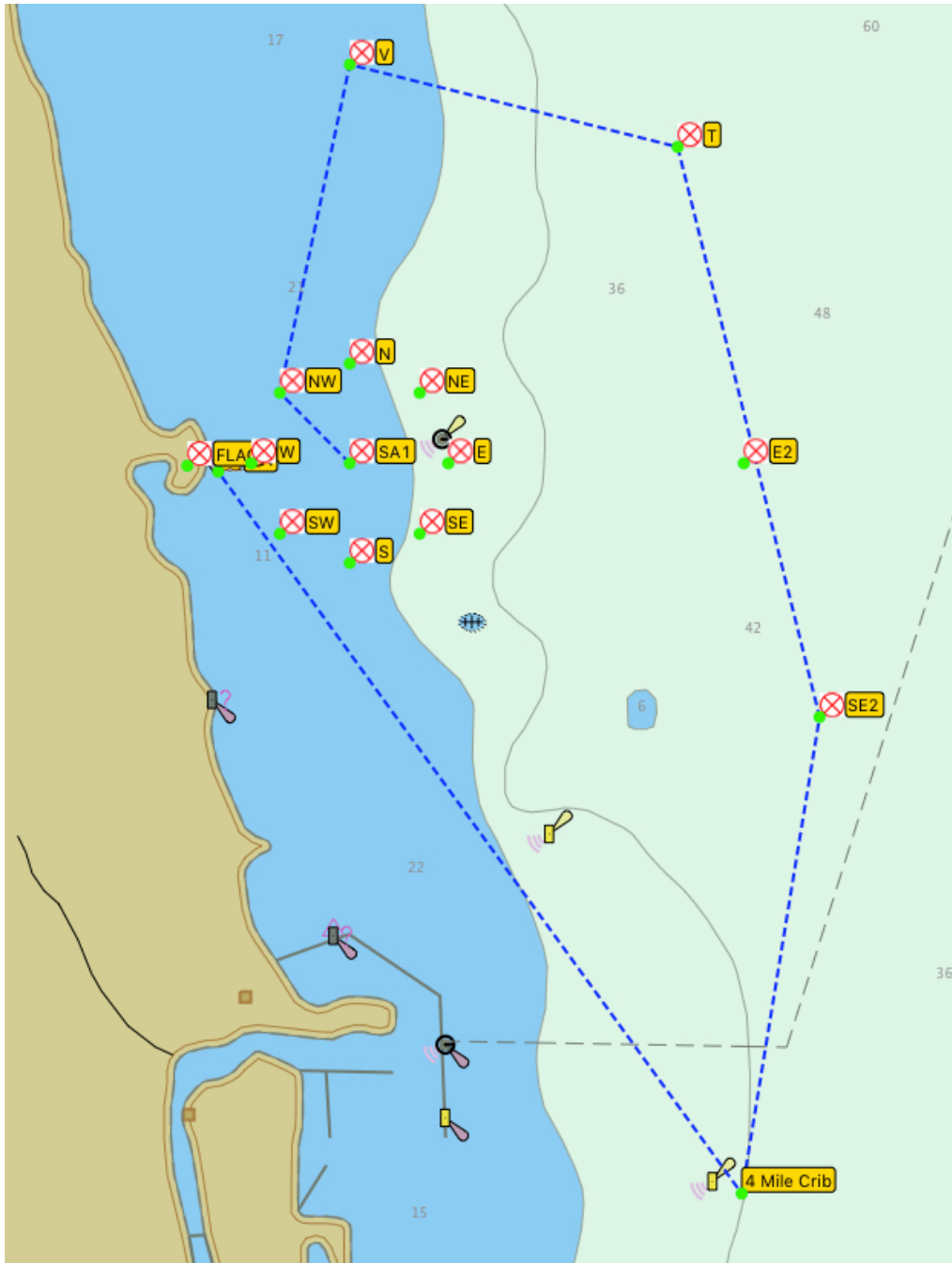


# CHICAGO CORINTHIAN YACHT CLUB



## SAILING INSTRUCTIONS - AMENDMENT #2 -- HOBELMAN - LONG DISTANCE --

COURSE "NW" (20.61NM)



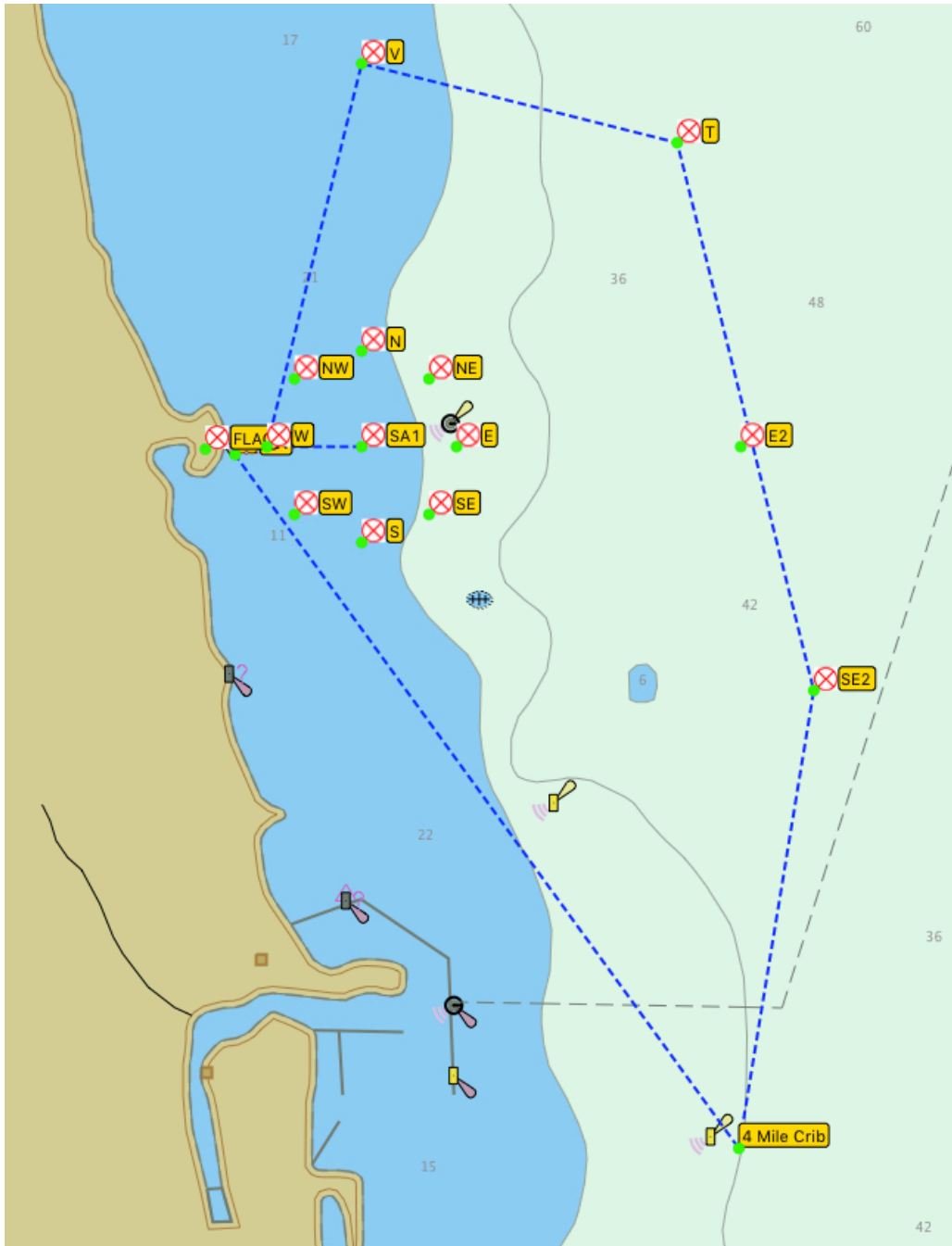


# CHICAGO CORINTHIAN YACHT CLUB



## SAILING INSTRUCTIONS - AMENDMENT #2 -- HOBELMAN - LONG DISTANCE --

COURSE "W" (21.17NM)



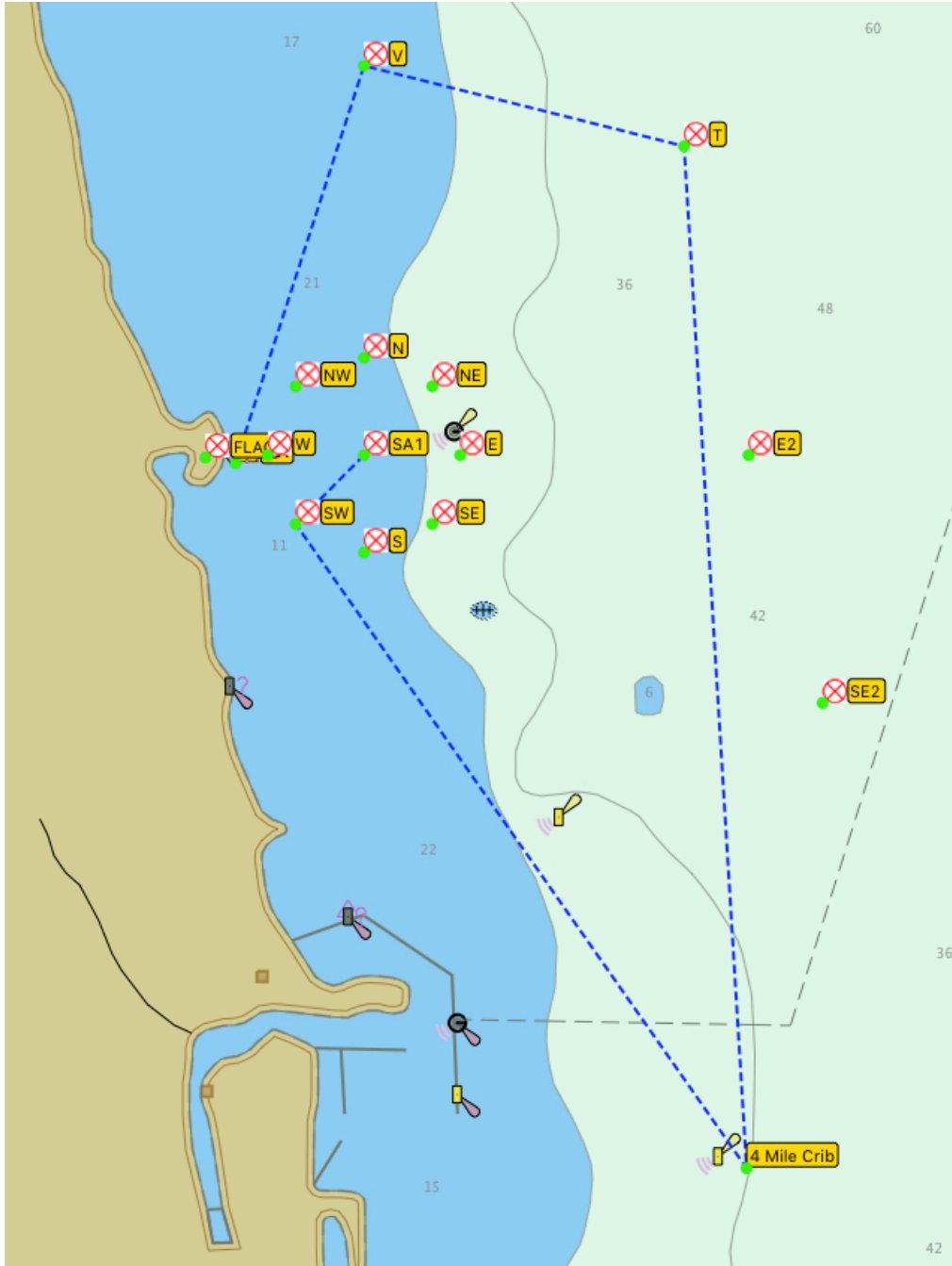


# CHICAGO CORINTHIAN YACHT CLUB



## SAILING INSTRUCTIONS - AMENDMENT #2 -- HOBELMAN - LONG DISTANCE --

COURSE "SW" (20.49NM)



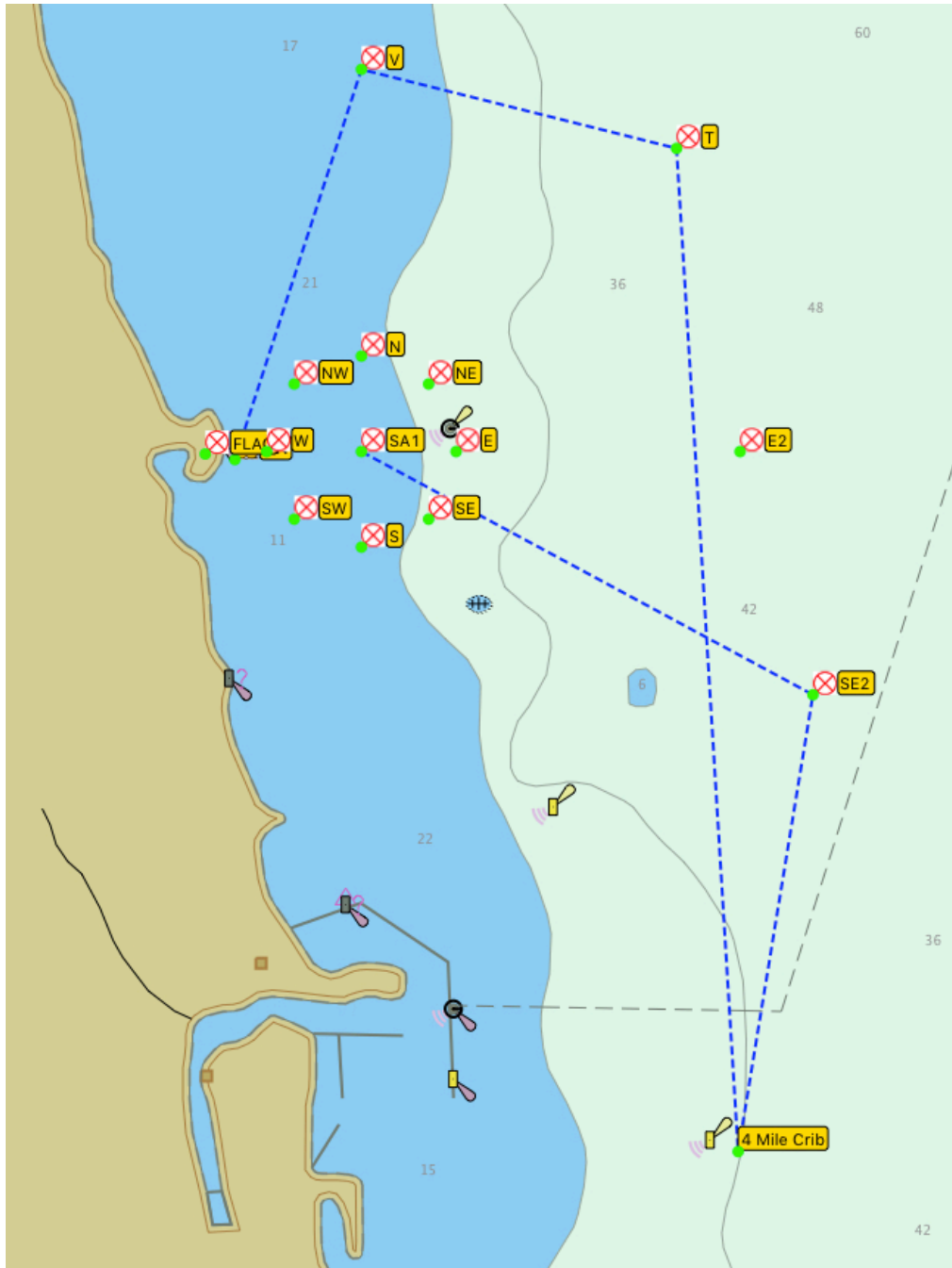


# CHICAGO CORINTHIAN YACHT CLUB



## SAILING INSTRUCTIONS - AMENDMENT #2 -- HOBELMAN - LONG DISTANCE --

COURSE "SE" (21.33NM)



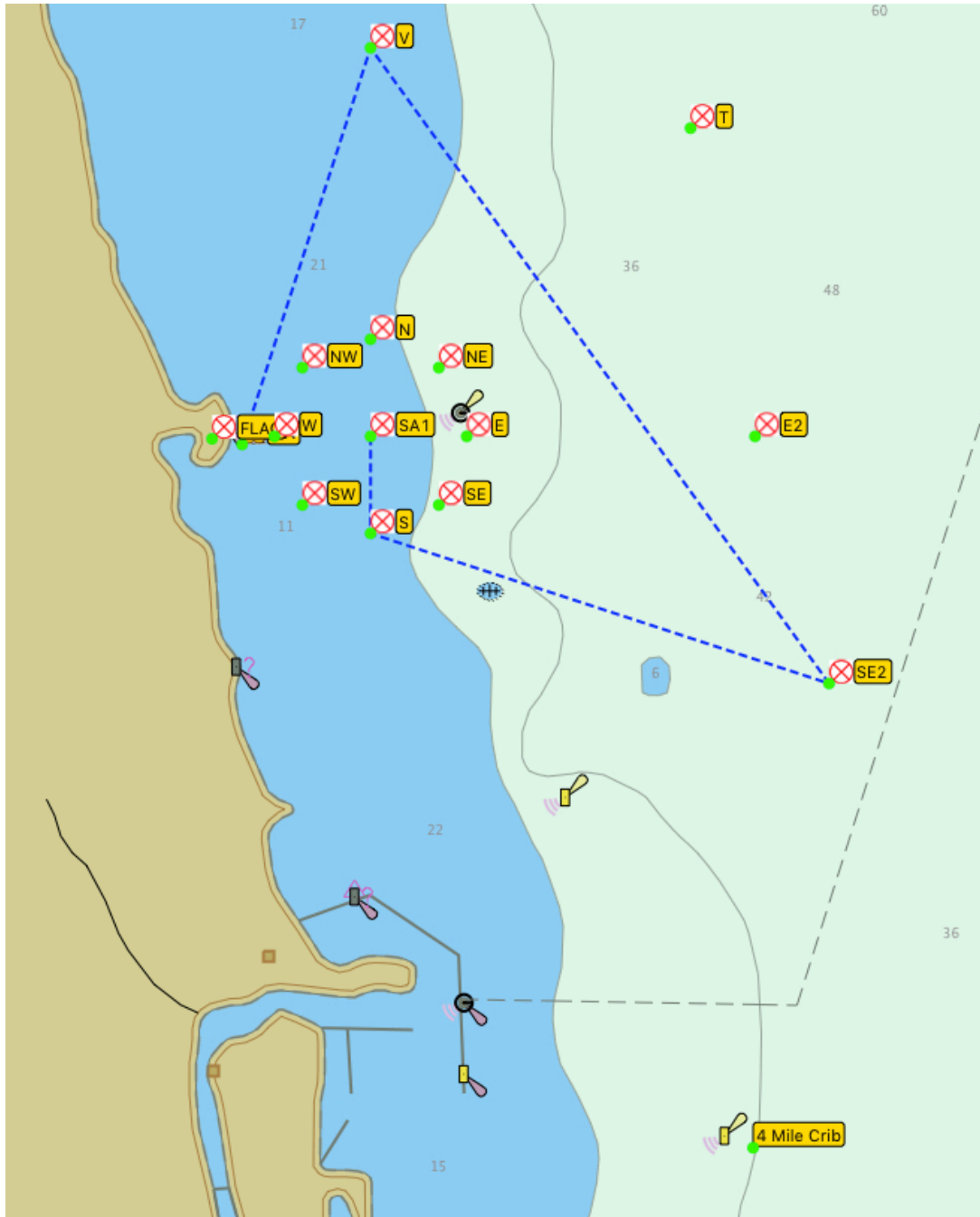


# CHICAGO CORINTHIAN YACHT CLUB



## SAILING INSTRUCTIONS - AMENDMENT #2 -- HOBELMAN - LONG DISTANCE --

COURSE "S-" (13.76NM)





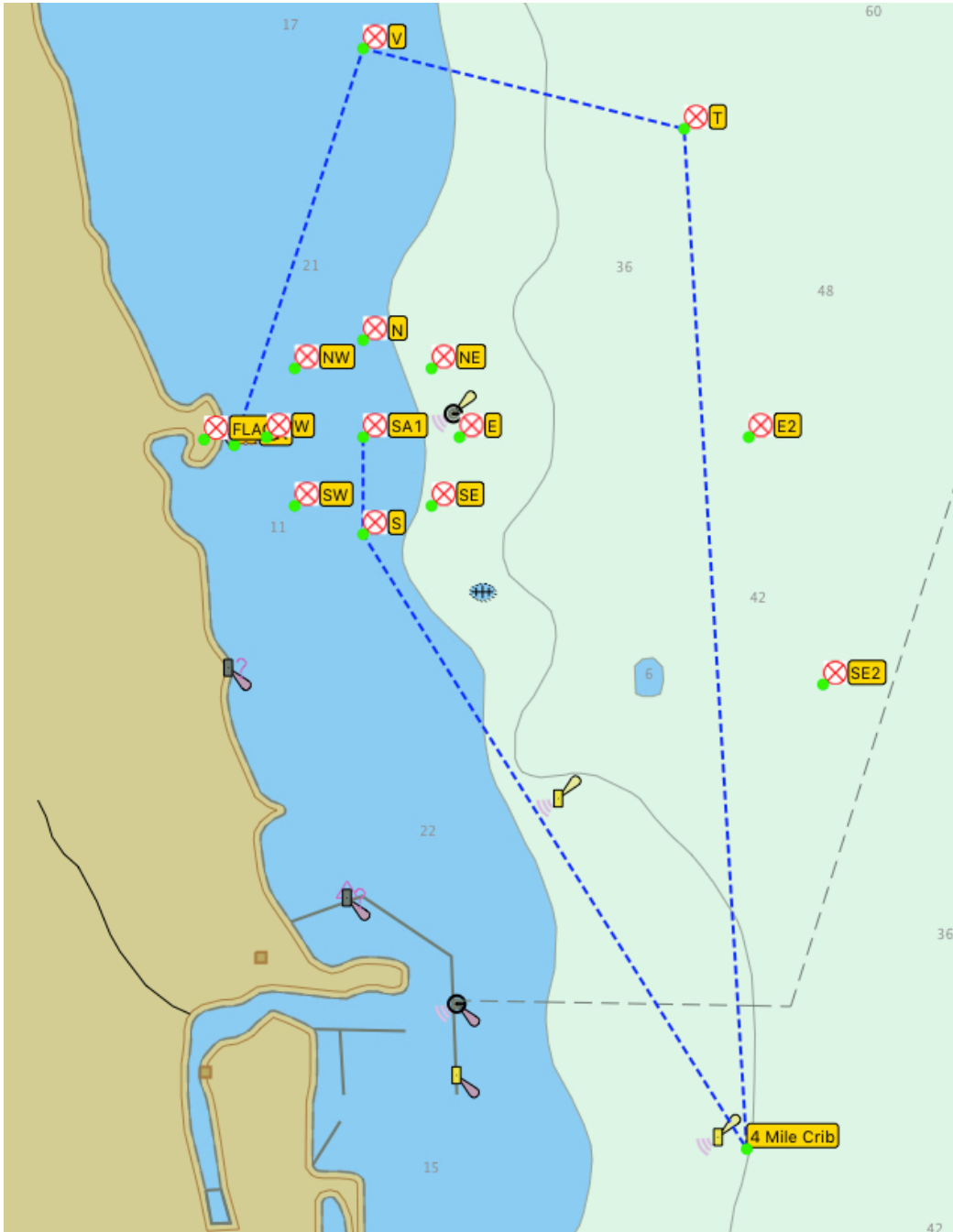


# CHICAGO CORINTHIAN YACHT CLUB



## SAILING INSTRUCTIONS - AMENDMENT #2 -- HOBELMAN - LONG DISTANCE --

COURSE "S" (20.01NM)



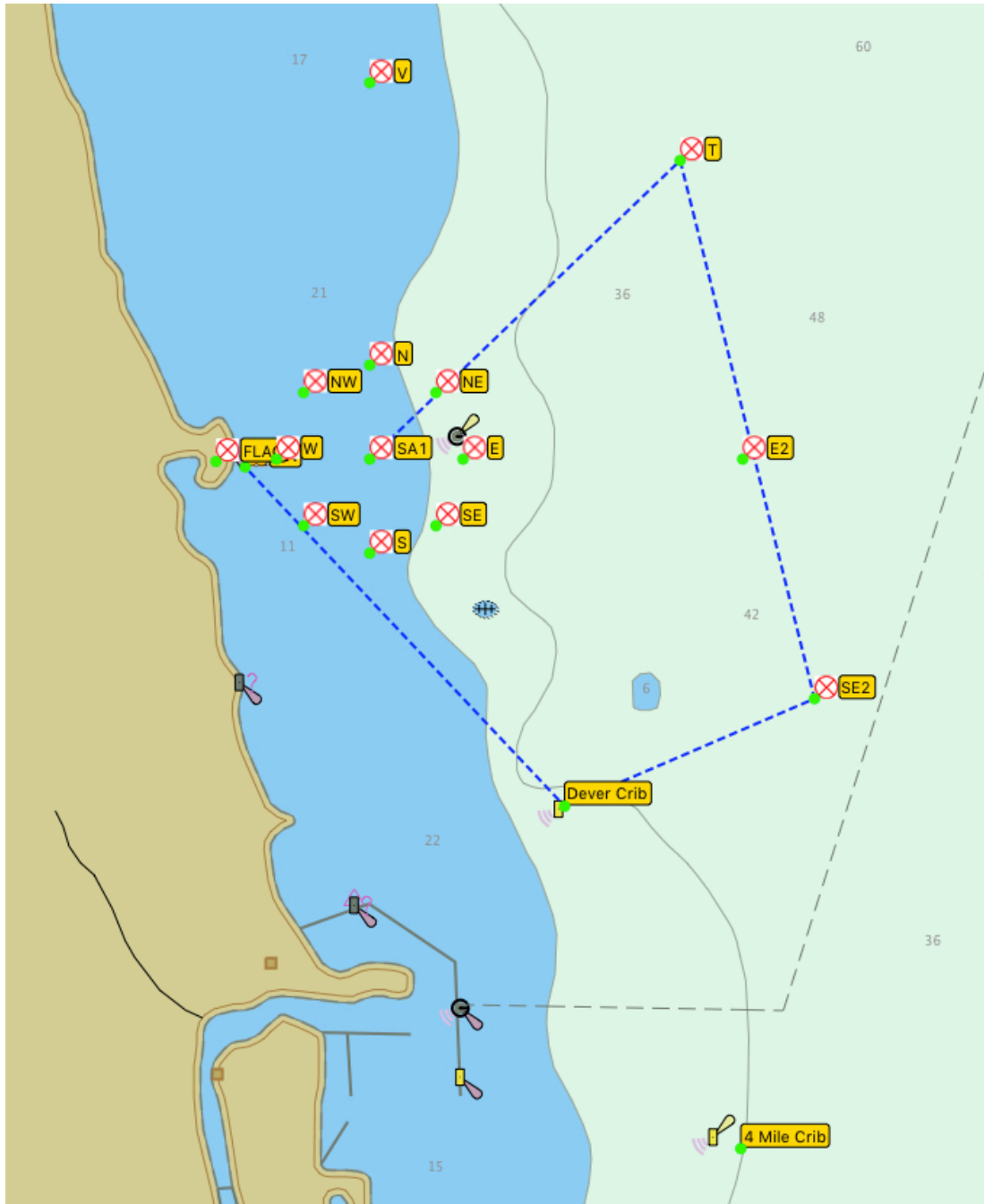


# CHICAGO CORINTHIAN YACHT CLUB



## SAILING INSTRUCTIONS - AMENDMENT #2 -- HOBELMAN - LONG DISTANCE --

COURSE "NE-" (13.74NM)





# CHICAGO CORINTHIAN YACHT CLUB



## SAILING INSTRUCTIONS - AMENDMENT #2 -- HOBELMAN - LONG DISTANCE --

COURSE "NE" (18.22NM)

